

# ANNUAL REPORT 2017 - 2018

*Space2b Social Design*



TOGETHER WE MAKE A DIFFERENCE



At **Space2b** we follow a set of principles  
that are reflected in everything we do

### **WE BELIEVE**

We all deserve to feel safe and happy

We all want to belong

We all need to be fulfilled

### **WE KNOW**

Connections make us who we are

Financial inclusion gives us self worth

### **WE PROVIDE OPPORTUNITY**

Space2fly – product & business development

Space2work – on the job work experience

Space2connect – making connections



# CONTENTS

A Word from the Chair – Janne Morton	5
A Word from the Co-founders - Mariam Issa and Janine Lawrie (CEO)	7
Our Story So Far	9
About Space2b – Who we are, Our Model, What we do	11
Our Vision	12
Our Strategic Goals	13
2017-18 Financial Snapshot	15
2017-18 Highlights	16
Our Programs - Space2Fly	18
Our Programs - Space2Work	23
Our Programs - Space2Connect	27
ArtSpace	37
Our People	40
Our Supporters	43
Looking Ahead	45





## CONNECTIONS, COMMUNITY & OPPORTUNITY

**Space2b** is a simple idea with big ambitions. Fostering connections, building community and creating opportunities. It's a social enterprise, a space for training and mentoring. It's an art and design space that enables those who have recently arrived on our shores to find and create their own job opportunities, and work toward achieving financial independence. It's a space to gain work experience to improve job prospects, facilitating pathways and programs to connect, create networks and enrich lives.



## A WORD FROM THE CHAIR

Janne Morton



Space2b has had another huge year.

It's time to thank everyone who has been involved, everyone who has donated their time, their energy, their money to contribute to the thriving art and design enterprise community that is Space2b.

We are now firmly established in our Chapel Street home with a busy retail shop selling an amazing range of high-quality arts and crafts, a gallery that has regular exhibitions of art work by refugee, migrant and local artists, and a training space that is host to adult and childrens' workshops. The café build at the back of the Space2b premises has been underway for some time now, transforming a dark pigeon-infested space into a cool laneway café that will open in 2019.

Those of you who have visited Space2b over the last year will have seen a gradual change for the better in the local environment. The laneway at the back is now made beautiful with a mural designed and painted just in time for the annual Space2b laneways festival, where people were entertained with music, stalls and food, and all admired the vibrant laneway paintings. More of this is planned for the coming year.

Importantly Space2b is tracking well towards financial self-sustainability – a major goal over the next couple of years. This is a gradual process, but we have already come far with many of the shop and training positions being funded by a combination of grants/government subsidies and shop profits.

But most importantly of all, as you will discover in the pages of this 2017-2018 annual report, Space 2b continues to expand its work with newly arrived refugees and migrants – through its three pathways Space2work, Space2fly and Space2connect, and to foster strong connections with the local community.

The Space 2b Board meets regularly to review the ongoing social impact and commercial viability of the organisation. Our thanks go to everyone involved in Space2b.

Janne Morton  
*Space2b Social Design Chair*



'For newly arrived, that first oppprtunity, that first connection, that first Space2b, is so critical in setting them on that pathway to success'

*Kon Karapanagiotidis, Asylum Seeker Resource Centre*





## THE CO-FOUNDERS Mariam Issa & Janine Lawrie (CEO)

*The inclusive Space2b model is at the very core of the ethos of its founders; Mariam Issa, a Somali refugee and Janine Lawrie, an established designer from an English language background.*

Together, this dynamic duo have built an inspiring community with Space2b. Along with the support and hard work of a small but determined group of staff volunteers, the pair have shown in the strengths of their partnership what can be created, through their perfect marriage of hearts and minds.

For me Space2b is about partnerships, connections and opportunities. We have built a unique model of a buddy system in everything we do, which is based on the relationship that Mariam and myself have. We are continuously learning, from each other, about each other, with each other. My 'to do list' style and her 'just trust and it will happen' style meet beautifully in the middle and have created a dynamic and ever eventful Space2b

### Janine Lawrie, Founder

I believe it is not just by coincidence that Janine Lawrie and I met. Her motivation for creating Space2b came from working with a Somali refugee named Abdi, and as a believer of synchronistic events, I think it was only natural for the universe to send her my way. I, myself am a Somali woman who understands the pains Abdi endured and what it is like to start over in a new country as a refugee.

Our vision for Space2b is to foster a community where respect, acceptance and understanding is practiced; where people can find their dignity and self-worth again. Where we learn and grow without judgement. So I would like to say space2b is many things to many people, and for me personally it is the Space2b inspired!

### Mariam Issa, Co-founder

*I found my voice in  
Australia.  
I was a seed in Kenya  
but now I am a  
nourished fully grown  
Eucalyptus tree!*

Keeru





## OUR STORY SO FAR

*Stories tell us who we are. They influence us in various ways at different times in our lives. They can inspire us, move us, and make us feel sad or fill us with hope. In their telling, they give life to our private world and connect us with others. Some stories are hidden away until the time is right, and some just need to be told.*

We all have many different stories to tell but are often shared only when we feel safe. Abdi must have felt safe when he was sitting at Janine Lawrie's kitchen table. Janine, a fashion designer was looking for someone to make her designs locally, Abdi, a recently arrived refugee from Somalia was a tailor in need of work. A mutual friend brought Janine and Abdi together and over a cup of tea Abdi told his story.

Abdi had spent his youth in a Kenyan refugee camp after fleeing his war torn home-land in Somalia. After thinking he'd lost his family, he was reunited with them in Australia. Abdi told Janine that his dream was to set up a tailoring business.

As a newly arrived refugee with few connections, Abdi struggled with this new language, culture and system, and had no idea where to start. Abdi needed a friend and mentor and Janine was that friend.

*From the seeds of this connection, an idea was planted.*

## FROM SEED TO TREE - IDEAS INTO ACTION

With a relationship long consolidated before the birth of Space2b, Mariam Issa and Janine bonded over their passion to create a community based place. Mariam, a refugee from Somalia is not only an author, inspirational public speaker and activist, but she is also the founder of RAW (Resilient Aspiring Women). Based in Melbourne, RAW is a not-for-profit organisation, dedicated to promoting community, culture and cuisine.

With Janine's ideas, energy and enthusiasm and Mariam's support and connections along with her 'let's just do it' attitude, Space2b was launched in the City of Port Phillip in 2013. Space2b has made its mark in the city as a dynamic artistic hub where people can connect, learn and feel part of a community.

Our social enterprise is a unique, dynamic creative workspace that has grown to include a retail outlet, gallery, design studio, workshop, training centre and small business hub. After two pop up shops in 2015 and 2016, Space2b successfully opened its first permanent home in Balaclava in 2017, and we are eagerly anticipating the launch of our online store and Laneway Café later this year.





Handmade, hand designed, hand screen printed in house by the space2b  
newly arrived trainee designers.



# ABOUT SPACE2B

## WHO WE ARE

Space2b enables those newly arrived on our shores a safe space to *work, train, connect, participate* and to become financially independent.

## OUR MODEL

We are all about connections

Our fully inclusive model incorporates every aspect of our business to provide opportunities for the local community to connect with new migrants and refugees. This model is at the very core of the ethos of its founders; Mariam Issa, a Somali refugee and Janine Lawrie, an established designer from an English language background.

This program also benefits the local volunteers, giving them the opportunity to engage and connect with newly arrived migrants, refugees and people seeking asylum whilst also gaining work experience, skills and references.

## WHAT WE DO

We have developed three primary programs that allows Space2b to achieve our model;

### 1) *Space2fly*

Individually designed creative and business mentoring.

### 2) *Space2work*

Work experience across different aspects of Space2b; retail outlet, café, gallery, events; workshops and all other aspects of the social enterprise.

### 3) *Space2connect*

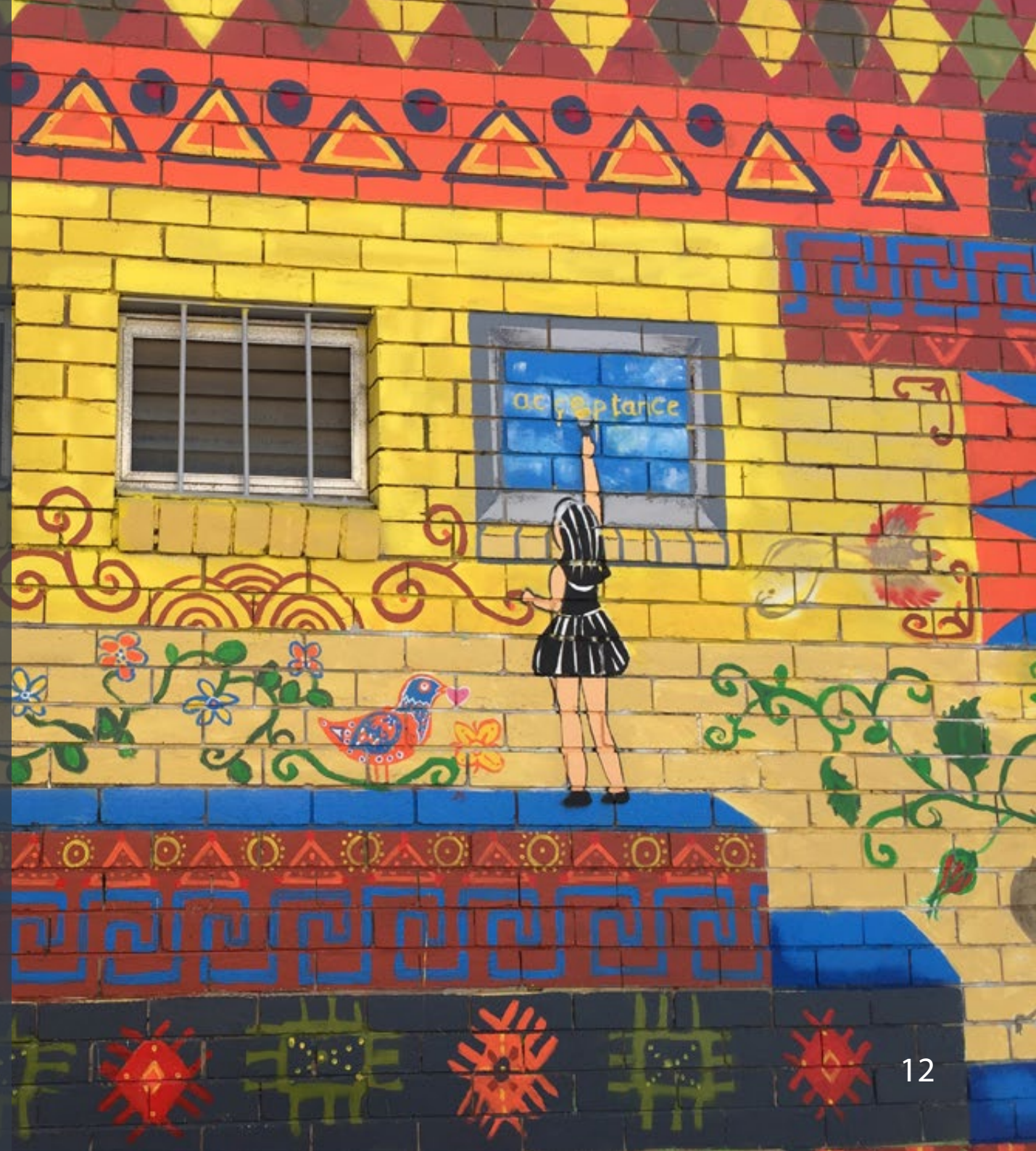
Activities, workshops and events that connect culturally diverse communities with the wider public.

All our programs provide opportunities for newly arrived to work side-by-side with locals, exchange ideas, make connections, in addition to growing their language knowledge and becoming part of the Australian designer community. All programs assist with improving English language skills and work abilities and by providing opportunities to connect.

## OUR VISION

Our vision is to have a fully self-sustaining art and design hub which offers new migrants, refugees and people seeking asylum a safe space to connect.

Space2b offers people opportunities that will lead to becoming an accepted & economically independent part of our community.





## OUR STRATEGIC GOALS

*Space2b strives to accomplish three main objectives:*

1.

To achieve financial sustainability

Currently Space2b is staffed mainly by volunteers. In order to employ staff to drive continuity and sustainability in the enterprise, we need to increase our revenue. Our income from retail and gallery operations is steadily growing, but we are aiming to capitalise on our space by developing other income streams such as the online shop and Laneway Café. Additionally, we are seeking to secure larger grants.

2.

To become a safe and welcoming space for refugees and newly arrived migrants in Melbourne who aim to become economically independent

We aim to provide a welcoming community hub and mentoring environment that is known throughout Melbourne, enabling us to attract the best possible mentors and motivated trainees. The programs, events and activities we create and participate in increase our recognition within the community, whilst growing and strengthening our community networks.

3.

To develop cross cultural activities for a more inclusive society

We aim to provide a platform for cross cultural conversations that fosters greater understanding across different cultures and faiths. Our widespread variety of events and activities, and communication between mentors, trainees and the wider community helps achieve this goal.

Many of the people we work with are highly traumatised. Art has been proven to reduce anxiety, depression, chronic pain and slow dementia, and be a great therapy for trauma



*Photo of Leila Ashtiani, artist and gallery manager. Photo by Andy Drewitt as part of our 'Imagining Laneways' art project 2017*



# 2017 - 2018

## Financial Snap Shot

We were pleased to report a strong financial position at the end of the Financial Year, with a healthy operating surplus, an improved bank balance and no significant liabilities. Our financial position has continued to improve with a doubling in value of the enterprise (retained earnings) from the previous financial year.

Whilst we made a significant financial commitment by moving into our new space, we are very pleased to report that the retail operations returned a profit, with sales exceeding our expectations and particularly strong over the Christmas period.

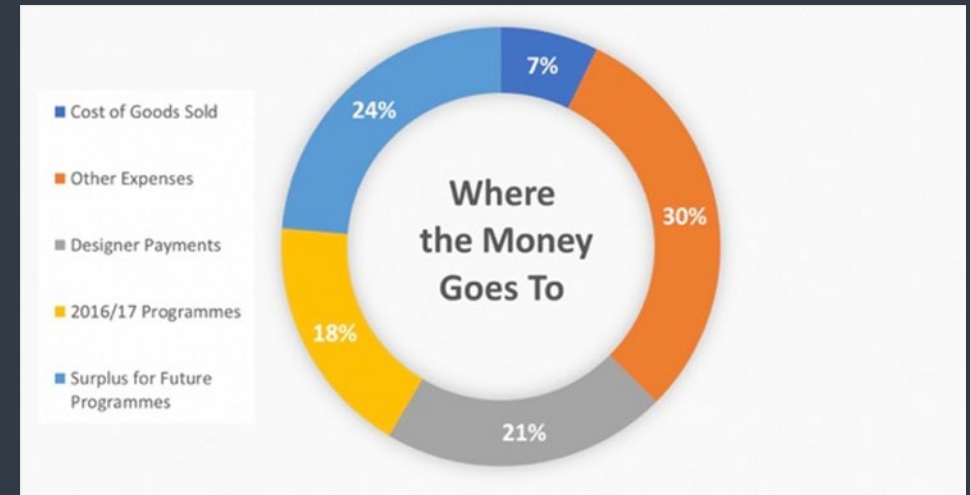
Retail sales, combined with our other sources of income such as grants and donations, resulted in a 31% increase in income. We were very pleased that our profit from retail more than tripled in the period, allowing us to invest more in our support programs.

In addition to retail sales, we have significant recurring grants, events and donations income for discretionary program spending.

We move into the new financial year without any debt and an 83% improvement in cash reserves, which will allow us to continue expanding our services and the quality of our work space.

We spent \$18,500 on programs benefitting migrants and have budgeted to increase this to over \$30,000 in the 2018-2019 financial year. We maintain our focus on keeping costs low and minimizing the percentage of income spent on non-program related wages and administration.

*Volunteers still provide a large percentage of our work power.*



# 2017 - 2018 HIGHLIGHTS

**18** Newly arrived creatives participated in Space2fly, our product and business mentoring program. 15 participants are now selling at Space2b, with five of these designers also selling through other outlets.

**5** Emerging designers have now become workshop leaders. Our workshop leaders help mentor our newly arrived designers to kick-start their businesses.

**48** Designers sell in our shop. We have a beautiful mix of established and new migrant emerging designers selling with us, with 31 of these designers being newly arrived.

**21** Newly arrived migrants participated in Space2work, our work experience program.

**1000** People attended, our annual 'Laneway Festival' to celebrate cultural diversity week – held in the laneway behind Space2b for the first time.

**7** Artists from different cultural backgrounds collaborated in painting the laneways behind Space2b, incorporating different patterns from around the world. Local Indigenous artist worked with children from the local community to include handprints in the work.

**65** School students participated in our laneway festival 'Get Striped' bag competition.

**St Kilda Primary School** have been working with us to develop a welcome program for newly arrived families, 'Across Barriers'.

**64** Artists have exhibited in our Gallery. The Gallery was booked out on a monthly basis for the entire year. This has brought in average 580 people into the Artspace at the openings.

**21** Newly arrived artists exhibited their work in our new ArtSpace gallery. Curated by our Gallery Manager, Leila Ashtiani, from Iran.

**120** People attended our welcome lunch, co-hosted with our sister organisation RAW (Resilient Aspiring Women).

**\$14,000** was raised at our dinner at St Ali with Julain Burnside and Judith Lucy.

**56** Hardworking and committed volunteers helped us make **Space2b**, the space to be.

**15** Mentors support our participants.

**28** Partnerships with schools, local councils, local businesses, universities, non-profits and employment services supported Space2b and our participants. We have a fellowship with Melbourne University to develop an evaluation model for Space2b.





Space2b recognises that many newly arrived have extensive skills, creativity and talent that can be utilised to generate an income to further support their families





## Space2fly

### *Product Design & Business Development*

Space2Fly is a personalised mentor and training program in art and design and business development, for participants to become creative business owners. Developed with and for newly arrived creatives, the program is a platform to generate connections, get real life work experience and work side-by-side with established designers.





## *Space2fly*

### *At Home*

This year with support from the City of Port Phillip we have mentored 6 new trainees from Iran, Iraq, Sudan, Pakistan, Japan and Myanmar.

Together with local volunteer designers they have developed products which you can now find for sale in the Space2b shop. Products range from japanese flower jewellery and crochet koalas to wax wraps. We also continue to support 12 existing newly arrived designers with product development, and business opportunities.

Two of the trainees, Muhubo and Ayaka, have taken their training a step further and together with their mentors have run workshops sharing their skills with the wider community. Muhubo teaching us somali weaving and Ayaka, the art of Tsumami-Zaiku flower jewellery.





Tracey Van Ingen & Sharifeh Amiri

*'What I love most about mentoring for Space2b is having the opportunity to share my experience with the trainees and see their skills and their confidence grow.'*

Tracey







*"I am attending the Space2Fly mentoring program to develop my products by incorporating Australian themes. It is an exciting opportunity for me towards becoming a creative artist. I am glad to be part of Space2b, where I can be involved with refugees and migrants using Japanese technique of Tsumami zaiku."*

**Ayaka**, Space2fly trainee

## Space2fly

### *Flying - Dandenong*

#### Chaw with one of her trainees

This year we have worked with two trainee designers from the previous year, Chaw and Sharifeh. With funding from the City of Greater Dandenong these two dedicated and hard working women have now become trainers.

Chaw has trained 4 women within her own community from Myanmar, working in their homes in Dandenong and teaching sewing, knitting and crochet skills and developing products for our retail store.

Sharifeh chose to work with a group of Sudanese women in partnership with the group Standup. She has used her skills as a seamstress to teach sewing to five Sudanese women. One of the five is keen to be trained to continue this work next year and also to develop African based clothing as her own range.







## *Space2work*

### *Space2Work – On-the-job Work Experience*

Space2Work provides that vital opportunity for newly arrived migrants to work and train together with local residents in a safe and welcoming environment.

Trainees acquire on-the-job skills training, receive a current Australian reference, and practice work place and conversational English, whilst building a pathway to employment.

The program offers placement opportunities in a range of different areas in our enterprise, such as sales and marketing, retail and customer service, accounts and stock control, gallery management and event management.

When our participants have gained enough expertise and are 'work ready', they are placed with our partners for further training and paid employment.





## *Space2work*

### *Business Membership Program*

This year, thanks to the Scanlon Foundation we have taken our Space2work job pathway program a step further by partnering with St Ali Roaster and Café.

The pilot program 'Trained2work', is trialling a 'Business Membership Program', where cafes and retail businesses will sign up to employ newly arrived from our specially trained pool of participants.

Supported by 12 volunteer buddies, the 14 candidates are global, coming from Ethiopia, Eritrea, Chile, Malaysia, Iraq, Afghanistan and India. They are currently receiving training in an Elwood grocery stores, St Ali café and at Space2b, in online retail, events management, volunteers coordination, Art Gallery management and retail.

The candidates' stories of migration are individually experienced but their commitment to train for a better future, unites them.





## ***Space2work***

Listening to a trainee say  
*“The Trained2Work  
program is the first  
thing I am doing  
in Australia that is  
opening a way to my  
future”*  
is why I coordinate.

*Vicky, Shop Coordinator & Space2work  
Coordinator*





### *Space2work - Darartu's Story*

Darartu left her family in Ethiopia when she was 18 and made the long walk to Egypt on her own. After 5 years in a refugee camp Darartu was granted refugee status to Australia. We met Darartu after she had been living in Melbourne for two years when she came to train at Space2b in the retail area under a government subsidy program. She was dedicated, reliable and super keen to make it in this new and strange country. Darartu had many struggles, which continue on a daily basis, but she now works full time and also in an Ethiopian restaurant. With help from a fantastic volunteer ESL teacher, Mary, Darartu passed her citizenship test and is now a working Australian citizen.

***'Space2b is my home'***





## *Space2connect*

*Connections make us who we are.  
They are why we exist.*

*At Space2b, we believe that connections are one of the most important contributors to making people feel that they belong.*

*Space2b runs numerous activities, events and workshops for new migrants and the local community to exchange stories and ideas and to make connections.*

*These events provide opportunities for participants to become trainers themselves, interact with the community, showcase their work and manage their business in a supportive environment.*



## *Space2connect - Laneway Festival*

The first space2b Laneway festival to celebrate our new home, diversity, acceptance and respect took place in March in the newly painted laneway behind Space2b. A unique partnership with local businesses in the small precinct, St Kilda Primary school, local residents and Meet me at the market, and supported by the farmers markets and Hank Marvin with funding from the City of Port Phillip.

The festival featured 25 designers showcasing and selling their work in addition to a range of activities, such as African Headwrap workshops and a cultural fashion show, music and dancing. With over 1,000 people attending, the market was a great success, stall holders reported great sales, and a survey with over 100 people gave very positive feedback.





*'The laneway festival was a great opportunity for me to sell my products and for me to promote my brand and connect with other designers from many different parts of the world'*







## *Space2connect - Annual Welcome Lunch*

In February 2018, 120 people attended our welcome lunch, co-hosted with our sister organisation RAW (Resilient Aspiring Women)







### **Space2connect - *Across Barriers - School Program***

'Across Barriers' asks children to think about other people, people who are new to the country and feel left out and how we can make them feel welcome! Vicky Premkumar. Year 5/6 students at St Kilda Primary were asked to design a 'get striped for acceptance and respect' image for our 2018 shopping bags. We had over 90 entries. Three were chosen as finalist and their designs were used on our bags and t-shirt.





## *Space2connect*

### *Art in the Community 2018*

Imagining Laneways was an art installation in the laneway behind Space2b, a celebration of traditional design and pattern from around the world.

The project was to produce work which acknowledges cultural heritage, whilst also enhancing the appearance and experience of a public space.

The work was developed through a collaborative process between 7 artists, a local indigenous artist, and 5 artists from Iran, India, Iraq, Pakistan and the UK. Participants included local neighbours and the school community.

The Imagining Laneways project was kindly funded by the City of Port Phillip Cultural Development Fund.





*'Space2b is a bundle of opportunities and positive energy, and has given me lovely longtime friends. Being associated with them has made me feel independent and confident that I can do something. Space2b has helped me improve my capabilities, all the while pushing me to better myself.'*

*My children have learnt the importance of hard work as they have seen me running market stalls and working on my art projects late nights, in addition to the usual domestic chores.*

*Working together with 6 other artists on the laneway mural was a great experience for me. It made me feel special, valued and part of the community. It gave me the confidence to become Space2b volunteer coordinator and then to go for a job. I am now working full time.*

*Thank you to Space2b, for the support and always standing beside me like a second family'.*

**Sarika Dohar**



A woman with long dark hair, smiling, wearing a blue and red patterned dress. She is standing in a room with other people in the background, some sitting and some standing. There are flags hanging from the ceiling and framed pictures on the wall.

# *Space2connect*

## *Fashion Show*





## *Space2connect* *Films2Inspire*

Films2Inspire is a community screening event of inspirational movies with a Q&A. Through thought provoking films and face to face interaction with people from various countries and cultures

Films2Inspire has a positive impact on social inclusion, increasing understanding of cultures, and encouraging connections which lead to a sense of belonging.

The first event was held with an audience of around 30 people with 'Prey the Devil Back to Hell' a film based around the war in Liberia. A Q&A with 2 speakers from Liberia whose parents experienced the events depicted in the film brought the film to life.



*As a Community Development student, Films2Inspire was one of the highlights of my experience at Space2b.*

*I learnt a lot about the power of working together, the importance of collective action and how we can work towards fostering social integration within our community.*

**Sweta**







*The Space2b Artspace was established by the hard work of volunteer Karen Hopkins, a professional artist from Melbourne.*

*The gallery has been booked out all year with local and newly arrived talented artists.*





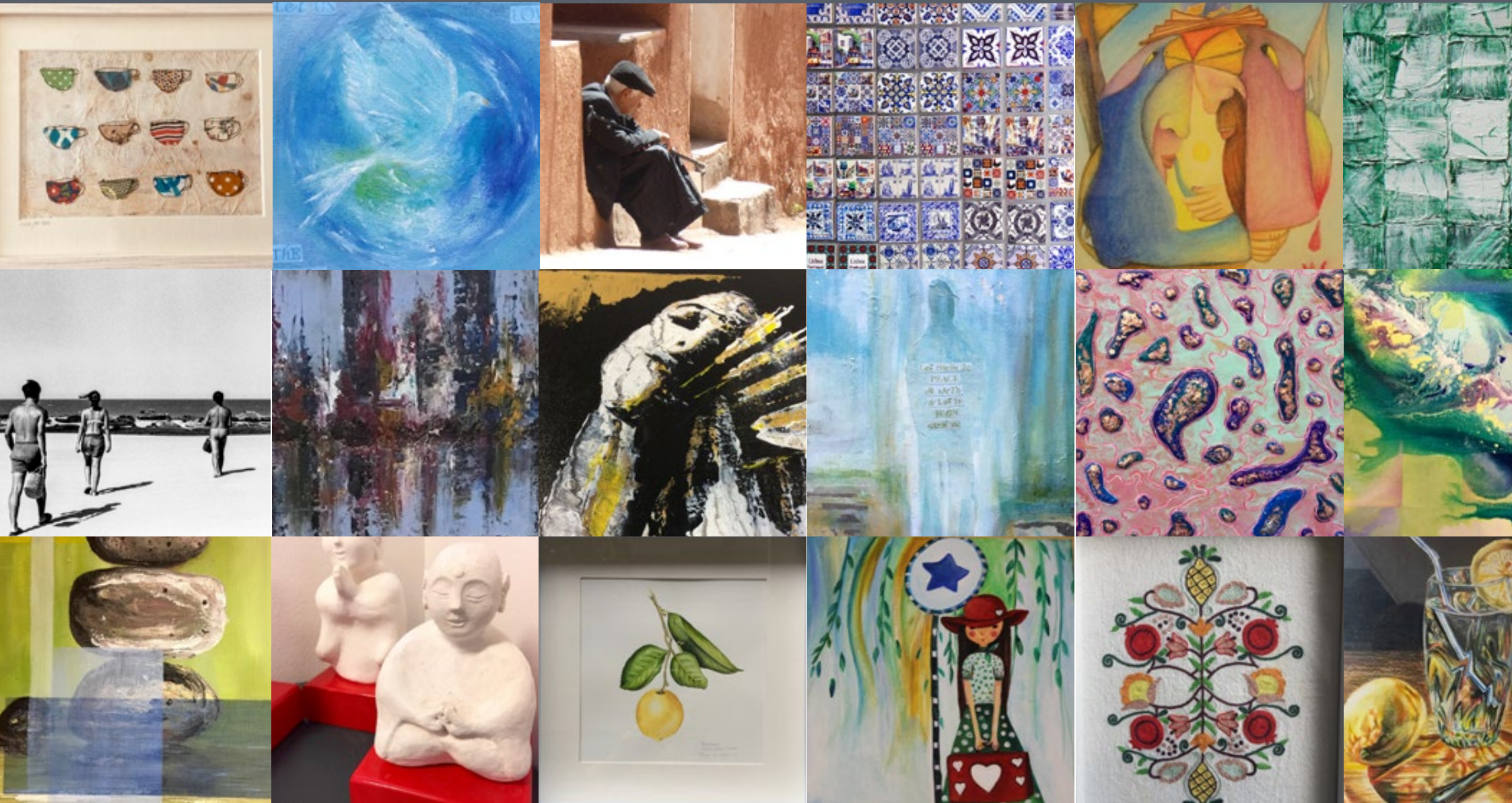
The artspace was launched with a wonderful exhibition and installation from the street artist BeFree and Suki



# SPACE2b ArtSpace

## 100 Paintings for Peace

Painting for Peace is an annual community exhibition where the community is invited to exhibit and sell a piece of work. In our first exhibition we managed to exhibit 100 paintings from over 60 artists. 25% were newly arrived artists.





# OUR PEOPLE

We are very fortunate to have a multi-skilled team on the board. Craig and Paul, our Company Secretary and Treasurer have been instrumental in fulfilling our obligations to Consumer Affairs in Victoria, as an incorporated association and charity.

## BOARD OF MANAGEMENT *THE VISION ROOM*



**Janne Morton**  
*Chairperson*



**Janine Lawrie**  
**Co-Founder &**  
*CEO*



**Mariam Issa**  
**Co-Founder &**  
*Ambassador*



**Paul Hellyer**  
*Secretary*



**Craig Francis**  
*Treasurer*

## KEY ADVISORS *THE BRAIN ROOM*



**Catherine Harris**



**Madeleine Grummet**



**Julie Mundy**



**Cate Newman**



**Cath Smith**



# OUR PEOPLE

## STAFF *THE ENGINE ROOM*



**Vicky Premkumar**  
*Shop Coordinator &  
Space2work Coordinitor*



**Nasyeetha Mohd Ismail**  
*Retail Trainee*



**Maria Mitsos**  
*Space2fly Coordinator  
& Workshop  
Coordinator*



**Karen Hopkins**  
*Artspace Coordinator*



**Clare Larman**  
*Creative Mentor &  
Spokesperson*



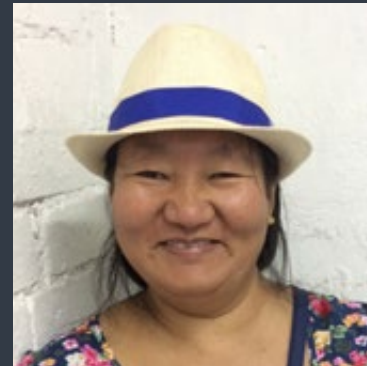
**Tracey Van Ingen**  
*Mentor in Fashion &  
Small Businesses*



**Andrea Lehken**  
*Stock Manager*



**Karen Bravo**  
*Shop Trainee*



**Lhkapa Chodon**  
*Market Coordinator*



**Sarika**  
*Volunteer Coordinator*





*I love volunteering at Space2b and people often ask me what I get out of it. Seeing people like Sharifeh, who came to this country a few years ago with no English, feeling vulnerable and lost, get up on stage and share their story with an audience of over 100 people was the most satisfying and enriching experience for me.*

*That is why I volunteer at Space2b*

Andrea - Stock Manager



# OUR SUPPORTERS

We wish to sincerely thank our collaborative partners and the community, from schools, local councils, local businesses, universities, non-profits and employment services who support Space2b and our participants.

*We particularly wish to thank the City of Port Phillip*



## Annual Fundraiser October 2017

Co-founders Janine Lawrie and Mariam Issa, with Julian Burnside, Judith Lucy and Salvatore Malatesta, host of the annual fundraiser, held at St Ali in South Melbourne.

# Thank You



# OUR SUPPORTERS





# LOOKING AHEAD

## *In the coming Financial Year:*

- *Space2Fly mentoring program will hopefully continue with funding from Dandenong and Space2b.*
- *ArtSpace will be booked with exhibitions throughout the year, including one exhibition a year for newly arrived artists to be subsidised by Space2b.*
- *Our Space2work program is trialling a business mentorship program where cafes sign up to employ and further train our hospitality trainees.*
- *We will be running our annual 'Laneway Festival' on March 25th, to coincide with Diversity week, celebrating acceptance and respect.*
- *We are aiming to have our café open and running by the end of the year.*
- *We are looking forward to our next Annual Fundraising event in December 2018.*





TOGETHER WE MAKE A DIFFERENCE